

# PRO CONTROL

## Advanced H264 Digital Video Recording



Tel: 0845 217 1521  
info@controlcctv.com

### Features and Benefits

One of the significant features of the range of Digital Video Recorders is the latest H264 compression - highly technical, but significant because it offers to the user:

1) **Quality** of recorded images, comparing other technologies: This is fundamental to the purpose of CCTV – evidential quality images.



2) **Fast:** Ability to record at live – 25 images per second from each camera simultaneously

3) **Efficiency** in the video compression – allowing more video to be stored for the same cost of storage, 3-4 times more efficient!

### Cost Effective

The same efficiency permits fast network connections, internally or via broadband without compromising your networks. Even allowing live / playback views with audio, via mobile 'phone (G3) – and operating ptz!

4) **Ease of use:** As detailed various methods to **quickly** find video / audio evidence.



### The PRO-CONTROL product offers:

H264 benefits, giving real-time recording at high quality for 31 days. Compact, reliable format – low noise. Up to 32 cameras, scalable, unlimited by networking units together. Central Station software. Ease of use, very fast video search with intelligent tools.

E-Map provides a fast method for users to locate where the camera is physically located. Useful for occasional users who are not familiar with the site layout.



Ease of use in playing video, VCR-like controls(5) ; fast forwards / backwards slide bar (3), multiple cameras together(1), any day(6), any hour(4).

Print(11), create DVD's (9) of the whole incident – the playing software is automatically burnt to DVD.

### Intelligent Features

Time is valuable; and the PRO-CONTROL DVR combines several tools that easily and rapidly assist the operator to find the actual incident in seconds:

1) **Visual Search**; As illustrated shows one image from each day over 25 days. Allows the operator to identify i.e., which day the car went missing – then click the preceding frame to 'drill-down' to hours, then minutes – then seconds. Finds an event over 25 days within seconds and a few mouse clicks!

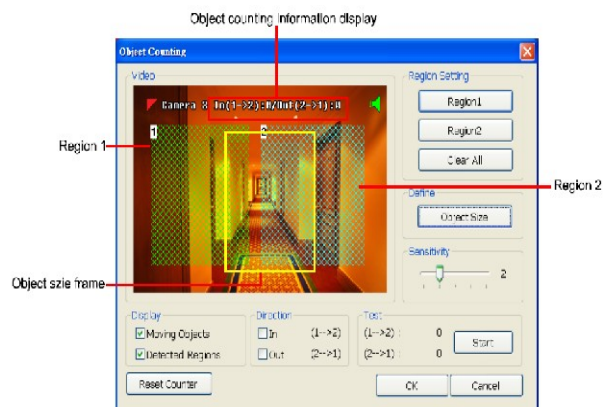


2) **Intelligent Search**; allows the operator to define (see red box) the area of interest, then the system will display video frames of each event when motion was detected in that area.

So if a laptop was stolen, target where it was, define the start time – and the system will list all the events automatically.

3) **Object Counting**; permits a simple method of counting between two regions, either 'IN' or 'OUT' or both.

4) **EPOS / Till transactions** can be linked into the system – and searches made upon keywords (i.e. 'VOID') and jump to the video of that time – showing the person performing that transaction. (Camera over the Till.) This could be any text input, i.e., from an access control system / BMS.



5) **Face Finder** is a recent development that actually detects when a face is present in up to two cameras.

Upon detection a snapshot of the face is taken as a thumbnail and added to a searchable database, and optionally trigger an alarm.

Upon selecting a thumbnail in search mode the video of when that face entered the target area is displayed. Again saving time to find evidence.

For example, a turnstile will only release when a clear face is captured, combined with data from the access control [As feature 4) above] makes for a secure auditable system.



s

## Alarms

Several types of input (intruder PIR alarm to 'duress switch' or 'Personal Attack' activation, even wrong direction on object counting – or face detection!) can initiate alarms that can be defined to alert either the operator locally, audibly and visually – or remotely at a central station which will also instigate live viewing of the site, and the ability to listen / talk back to the remote site, including activating relays, i.e., turn on lights, lift barriers. Images can be e-mailed to groups of people, or video sent off site to a secure server via the network or Internet.

**Intelligent alarms** include missing object, suspicious object and scene change (somebody has moved the camera).

Consider health and safety, set the system to monitor fire extinguishers for removal, or fire escapes to ensure obstructions have not been left. Flexibility within the system allows customisation specific to your requirements.

## **Model SA6416, 16ch 1Tb (Expandable)**

### Product Specifics

- 16 channels Video and Audio input
- IP & Analog PTZ/ camera control
- MegaPixel IP cameras supported
- Multiple and configurable channels display on CCTV monitor
- Supports Dual-Monitor and Spot-Monitor output
- Supports up to 132 sensors in/relays out
- POS Integration and professional POSViewer
- Powerful remote software integration: CM3000, Remote Console, WebViewer, PDAViewer, and SmartViewer (for Symbian/ Windows Smart phone)
- Lightweight case for minimal shipping cost
- Built-in DVD-RW support backup to DVD/ CD directly
- Three SATA removable HDD trays
- Supports static as well as dynamic de-interlacing for smoother graphics
- Built-in noise reduction algorithms
- Embedded OS built in DOM (Disk On Module) to efficiently prevent virus attacking and operate even HDD crashed.
- Encryption of video algorithms for security purposes

### Video Features

- Embedded Operating System
- 16 composite video inputs (BNC Connectors) and/or 16 IP camera (selected IP cameras). Max. of 16 video feed per system
- 16 audio input channels
- 16 IP camera access (selected IP cameras)
- Video Format: NTSC/ PAL
- Support 352x240, 640x480, or 720x480/ 720x576 pixels (NTSC/PAL)
- RCA composite video out to CCTV/ TV monitor
- Support static as well as dynamic de-interlacing for smoother graphics
- Built-in noise reduction algorithm

### Display

- Supports up to 480/400 fps (NTSC/PAL)

- Compact and Advanced mode
- Auto scan with full screen display under 1, 4, 8, 9, 13, 16-camera display modes
- Digital zoom in for specific area
- Pan/Tilt/Zoom (PTZ) cameras: PTZ script is available for adding new protocols
- Auto Gain Control (AGC) balance image quality
- Night view ability
- Noise reduction filter

#### Recording

- Video compression: Advanced MPEG and H.264 compression
- Supports 352x240, 640x240, 720x480/ 720x576 (NTSC/PAL)
- Recording rate (NTSC/PAL): 480/400 fps (for SA6416E), 240/200 fps (for SA6216E)
- Two types of de-interlace method: optimized for static scene or dynamic scene
- Recording modes: Alarm trigger/ Motion Detection/ Smart/ Audio Detection/ Continuous/ Schedule recording
- Programmable masking zone blank under recording modes
- Intelligent shield protects privacy
- Auto recycling when storage disk is nearing full
- Live HDD size estimation tool
- Supports network storage devices

#### Search & Playback & Backup

- Real time playback without having to disable recording/network functions
- Powerful search: by date, time, camera, area, event, vision, and log file
- Bookmark function for quick link
- Complete playback control: playback, backward playback, fast forward/ backward playback, forward/backward frame-by-frame playback
- Digital zoom-in for specific area
- Export single frame to BMP file and print out
- Output "AVI" file for video clip
- Built-in DVD-RW backup to CD/DVD
- Backup device: flash memory , RAID, NAS, External HDD and internal SATA HDD (up to 4HDD)

#### Remote Access

- Simultaneous multiple remote live/recorded surveillance via standard web browsers
- Backup remotely
- Central Management server to connect up to DVRs
- Remote monitoring/remote recording/playback remote recording/playback server recording
- Full control of PTZ cameras remotely
- WebViewer/ PDAViewer/ HandyViewer/ SmartViewer (for Symbian/Windows Smart phone)
- 2-way audio communication
- 1, 4, 9 and 16 screen divisions
- Remote E-map
- Choose from dial-up, Internet or LAN speed
- Dispatch server allows you to broadcast video stream to the public

#### Schedule

- Record, enable network, backup reboot and disabling alarms
- One time or weekly schedule
- Scheduling can be done down to every quarter of an hour

#### E-map

- Shows the positions of cameras, sensors, and relays
- Store up to 8 different maps

#### Alarm notifications

- E-map notifications
- FTP notifications
- Voice modem call out notification
- Turn relay on (light switch, alarm, etc.)
- Plays warning sound (can be re-recorded)
- Start recording on multiple cameras (capture video from different angle)
- Send TV-out signals
- Launch E-maps
- Enlarge camera view
- Send SMS/MMS (requires SMS modem)
- Send event to Central Monitoring System
- Alert messages helps security follow proper standard operational procedures

#### User Access

- Setup as many users as you like with their own individual passwords
- Each user can be pre-configured to perform only certain actions (e.g. access specific cameras remotely)

#### I/O Card

- Built-in 4 sensors in/relays out
- Expanded up to 132 sensors in and relay out via E-I/O box

## Specification Highlight

SA6000E				
Item	SA6208E	SA6216E	SA6416E	SA6416E Pro
Operating system	Embedded OS			
Video Format	MPEG4 / H.264			
Video input	8	16	16	16
Display rate (NTSC/PAL)	240/200 fps	480/400 fps	480/400 fps	480/400 fps
Recording frame rate (CIF)	240/200 fps	240/200 fps	480/400 fps	480/400 fps
Recording frame rate (VGA)	120/100 fps	240/200 fps	240/200 fps	480/400 fps
Audio input	8	16	16	16
Sensor/Relay	4/4 (expandable)			
DVD-RW	Yes			
Removable HDD tray	2 HDD tray (support up to 3 HDD)	3 HDD tray (support up to 4 HDD)		
DOM	2GB			
Ethernet	RJ-45, 10/100/100 Mbps			
USB 2.0	Front 2 ports, Rear 4 ports			
LCD Display	Temperature			
Dimension (WxHxD)	290x160x480 mm			
Power	220 Watt			
Dual-monitor output	Yes			

Available as 4/8ch, 16ch and 32ch, features as above.

Also 1304NET, MPEG4 embedded low cost 4ch. (IR control)

All compatible with CMS3000 - central station s/w.



Tel: 0845 217 1521  
[info@controlcctv.com](mailto:info@controlcctv.com)

Please feel free to contact us should you require further information

